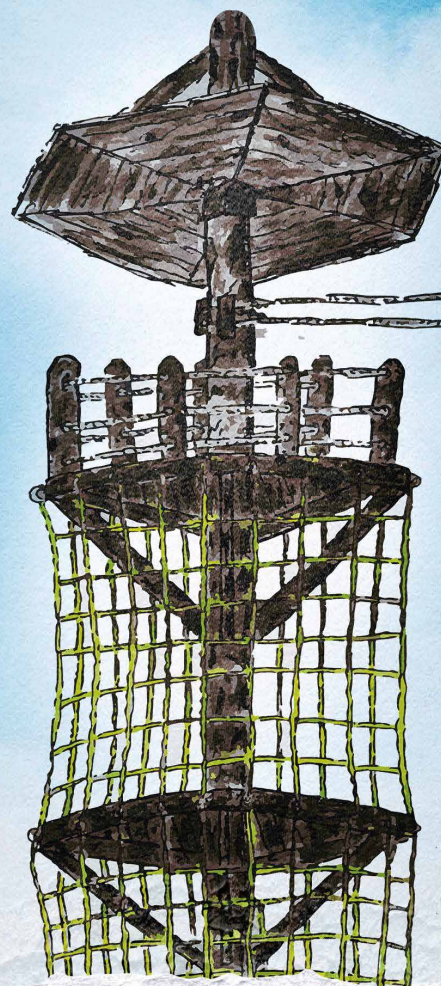




# AIRE LIBRE

INTERNACIONAL



Design for  
Adventure  
Courses

PAGE 6

Master  
Plan

PAGE 10

Deliverables

PAGE 23





— WHO ARE WE

# More than 25 years of experience in Adventure Courses

Aire Libre Internacional is located in San Juan, Puerto Rico, we have more than 25 years of experience in the Adventure Course industry. We serve the international industry and our experiences have taken us to Barbados, Honduras, Belize, United States, Costa Rica, Dominican Republic, Nicaragua, Mexico, and Puerto Rico.

We provide solutions for Adventure Courses. Our services include certified inspections, manufacturing, training, certifications, document creation, manuals, consulting, sale of equipment and materials, and more

"Our mission is to educate and provide high service to our customers, to help them achieve their goals and dreams regarding the operation, risk management, and management of their Adventure Course."

Dr. Luis D. Acevedo – ALI Director

Without a doubt, the Challenge Courses are here to stay. We have witnessed the transformation of Challenge Courses since the "60s" when Mr. Kurt Hann introduced them with Outward Bound. Although they began with an educational format, the introduction of its elements for tourism and recreational purposes was inevitable.

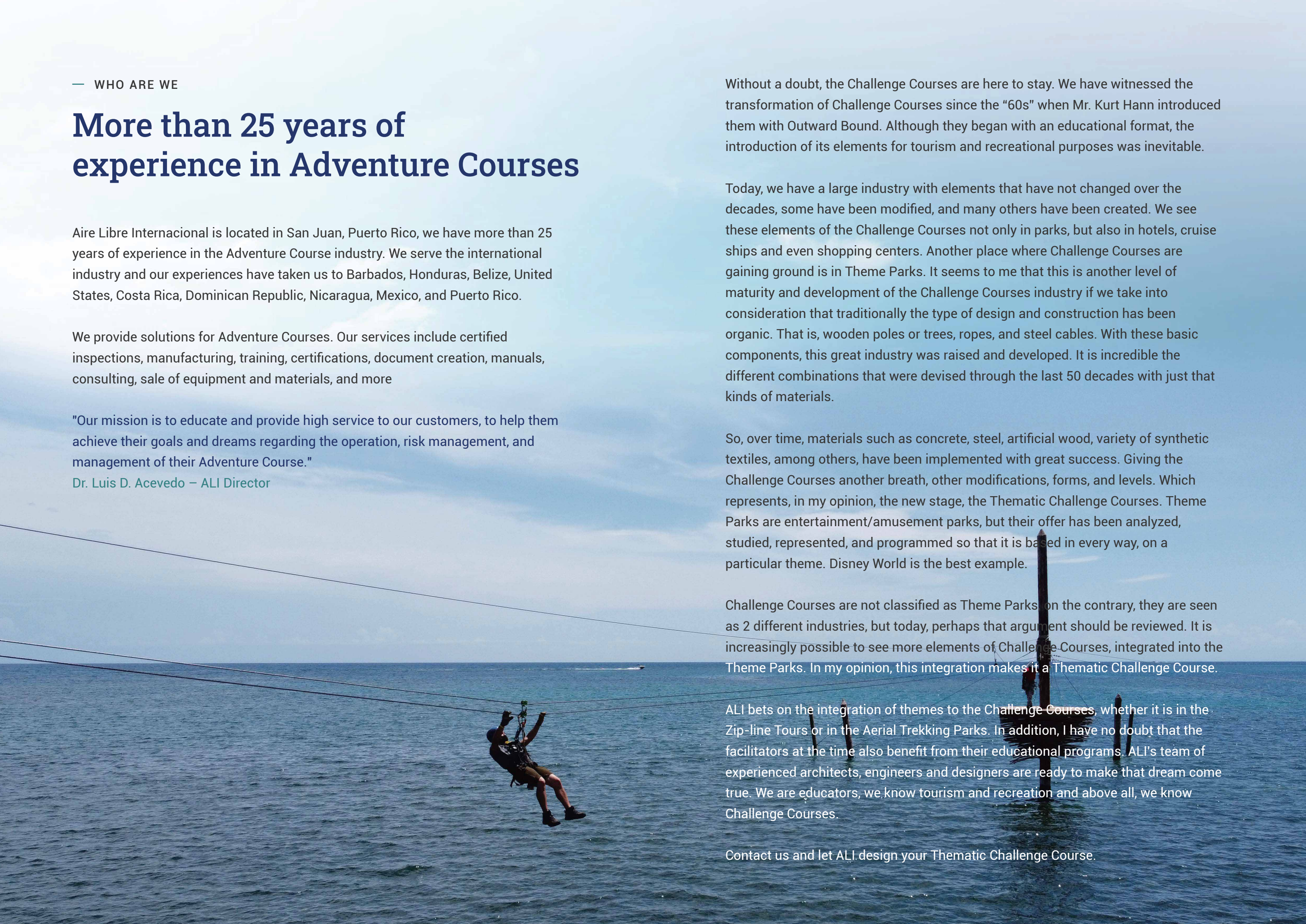
Today, we have a large industry with elements that have not changed over the decades, some have been modified, and many others have been created. We see these elements of the Challenge Courses not only in parks, but also in hotels, cruise ships and even shopping centers. Another place where Challenge Courses are gaining ground is in Theme Parks. It seems to me that this is another level of maturity and development of the Challenge Courses industry if we take into consideration that traditionally the type of design and construction has been organic. That is, wooden poles or trees, ropes, and steel cables. With these basic components, this great industry was raised and developed. It is incredible the different combinations that were devised through the last 50 decades with just that kinds of materials.

So, over time, materials such as concrete, steel, artificial wood, variety of synthetic textiles, among others, have been implemented with great success. Giving the Challenge Courses another breath, other modifications, forms, and levels. Which represents, in my opinion, the new stage, the Thematic Challenge Courses. Theme Parks are entertainment/amusement parks, but their offer has been analyzed, studied, represented, and programmed so that it is based in every way, on a particular theme. Disney World is the best example.

Challenge Courses are not classified as Theme Parks, on the contrary, they are seen as 2 different industries, but today, perhaps that argument should be reviewed. It is increasingly possible to see more elements of Challenge Courses, integrated into the Theme Parks. In my opinion, this integration makes it a Thematic Challenge Course.

ALI bets on the integration of themes to the Challenge Courses, whether it is in the Zip-line Tours or in the Aerial Trekking Parks. In addition, I have no doubt that the facilitators at the time also benefit from their educational programs. ALI's team of experienced architects, engineers and designers are ready to make that dream come true. We are educators, we know tourism and recreation and above all, we know Challenge Courses.

Contact us and let ALI design your Thematic Challenge Course.





# Contents

06

Design for  
Adventure Courses



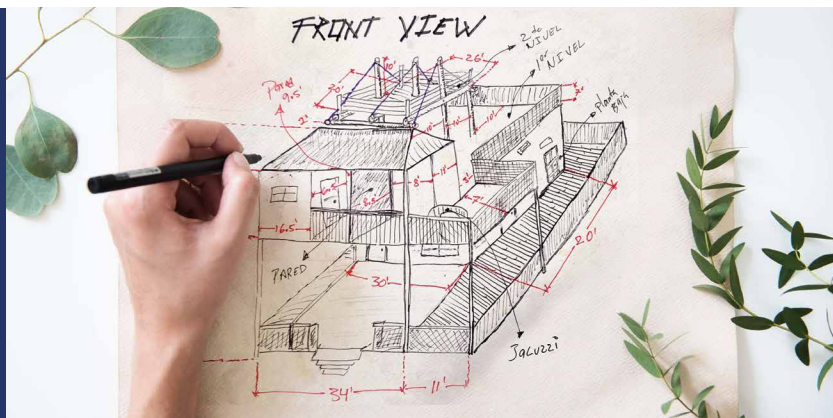
22

Creative &  
Technical Design



10

Master  
Plan



16

Operational  
Design



23

Deliverables



ALI's team consists of Engineers, Architects, Surveyors, Certified Park Inspectors, Adventure Guides, Park Designers, Vendors and Distributors of equipment and materials. ALI has many years of experience and all together we work to create and offer unique Designs to our Clients.

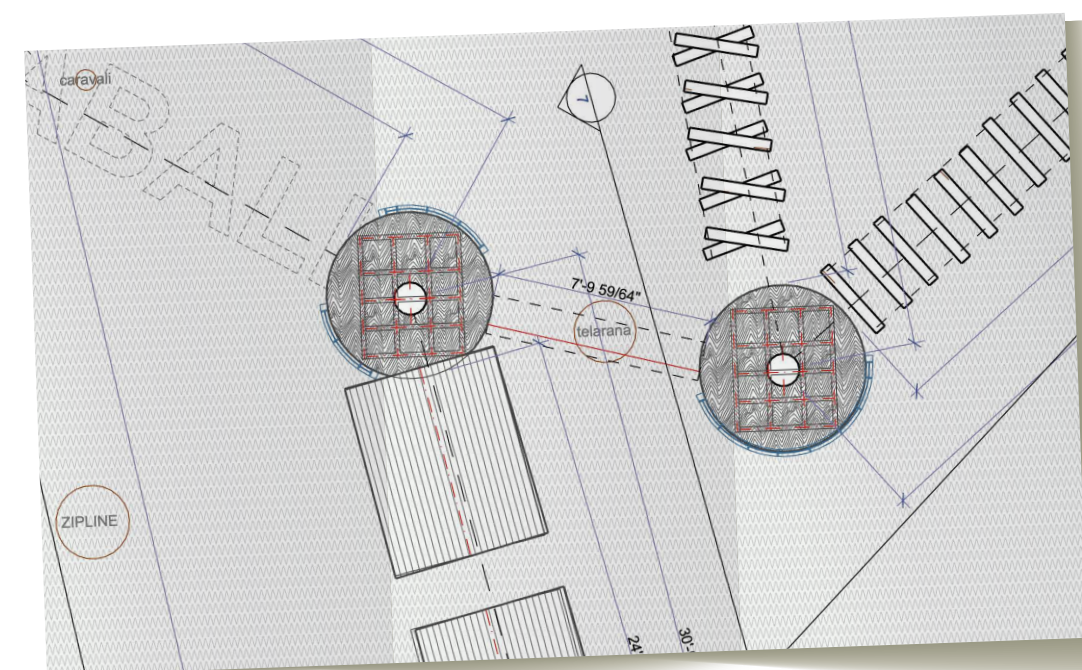
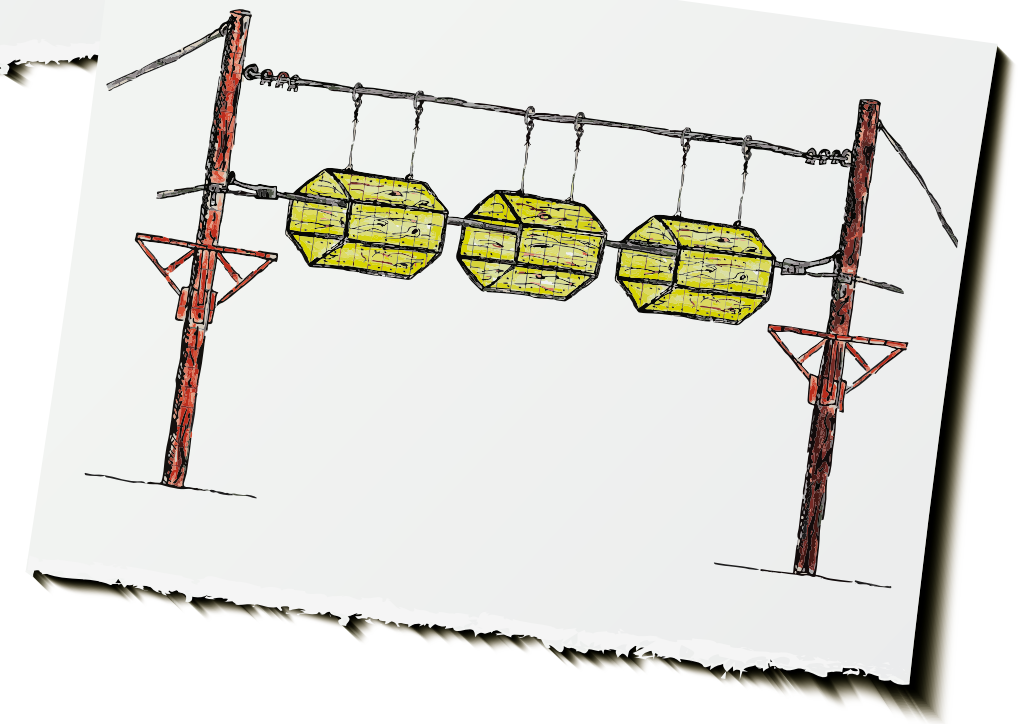
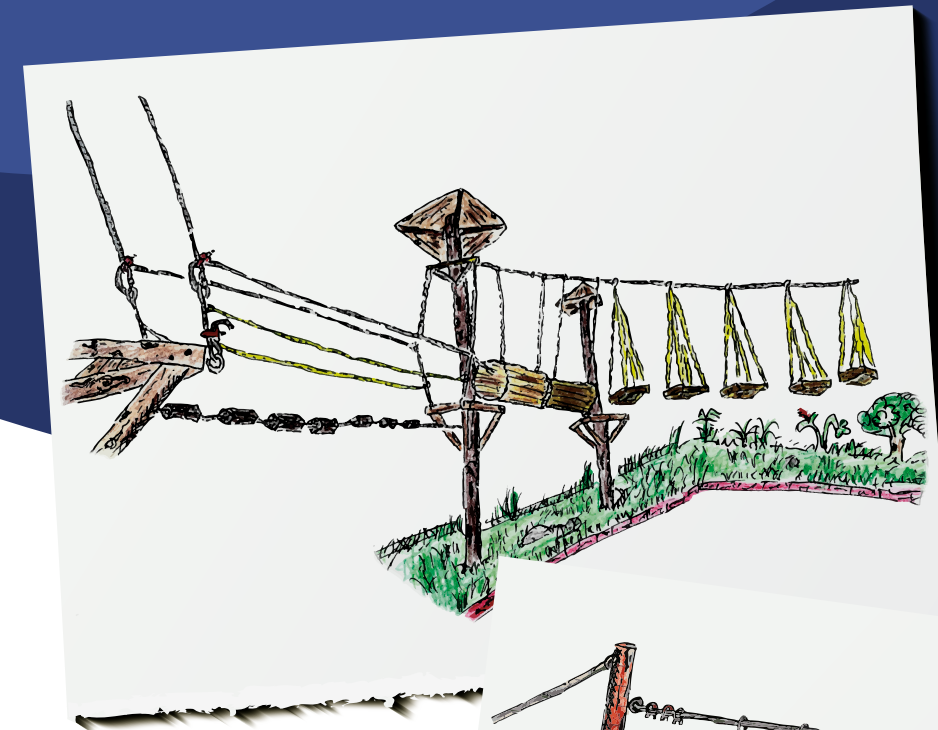
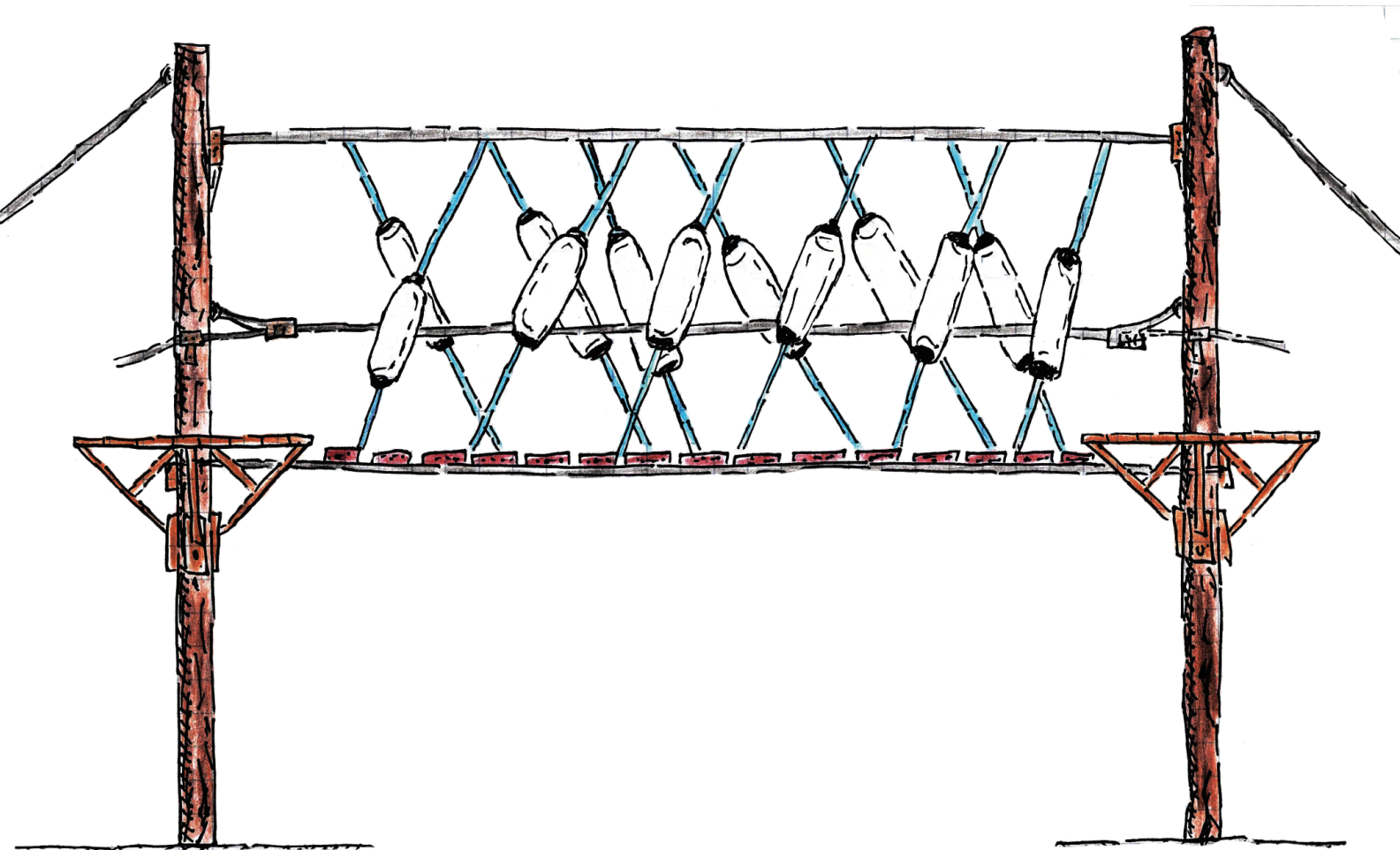
ALI has 26 years of experience in the Adventure Course Industry, and we are actively inserted in the international industry, which allows us to know and be updated with the latest equipment, materials, and trends.





# Design for Adventure Courses

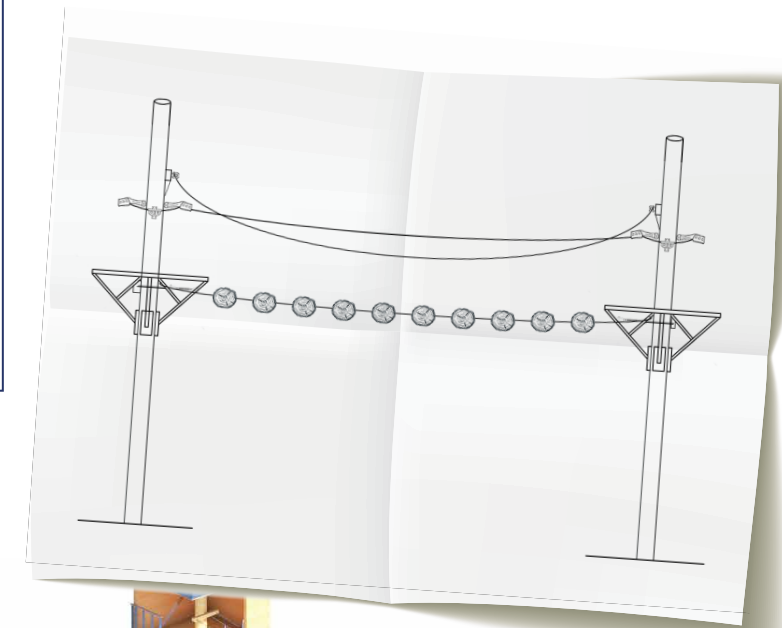
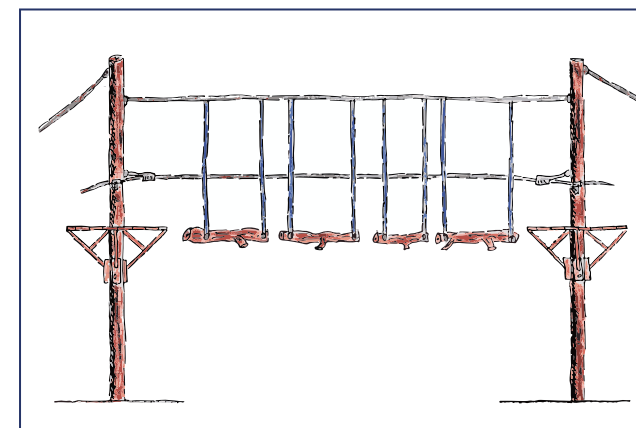
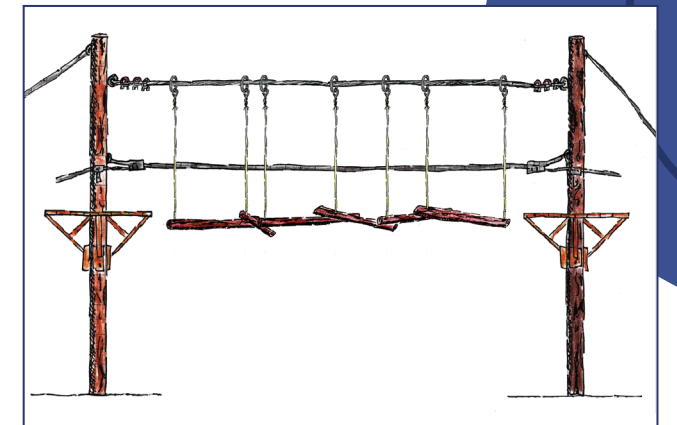
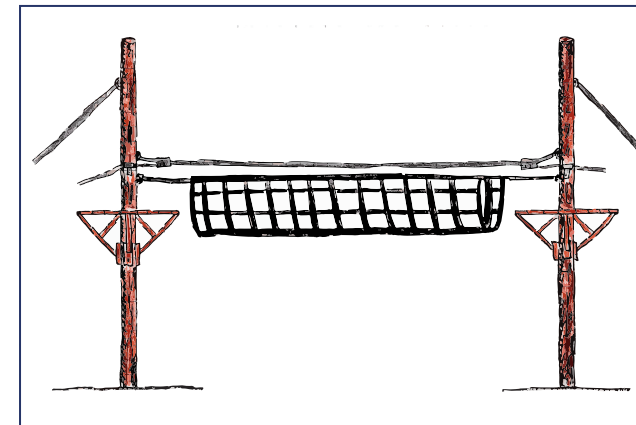
Design is a powerful process by which ideas and dreams are configured, together with other factors to achieve a desired final product. Aire Libre Internacional (ALI) Designs traditional and thematic Adventure Courses for a wide variety of clients. The ideal Course that is in the thoughts of one or several individuals, ALI makes it a reality through a process of observation, research, analysis, creativity, as well as presenting it artistically, graphically, and technically.





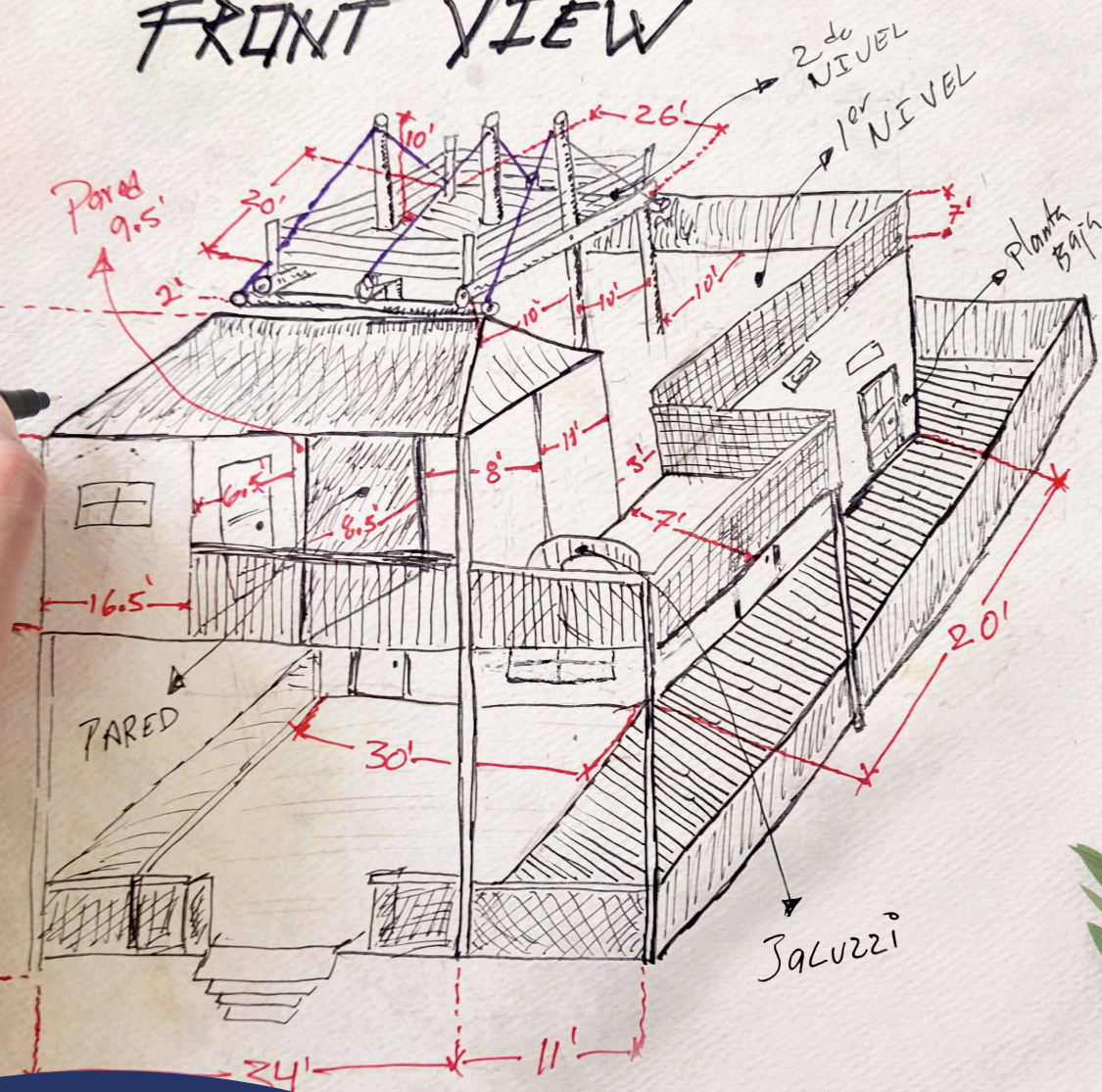


## Security and Experience





## FRONT VIEW



# Master Plan

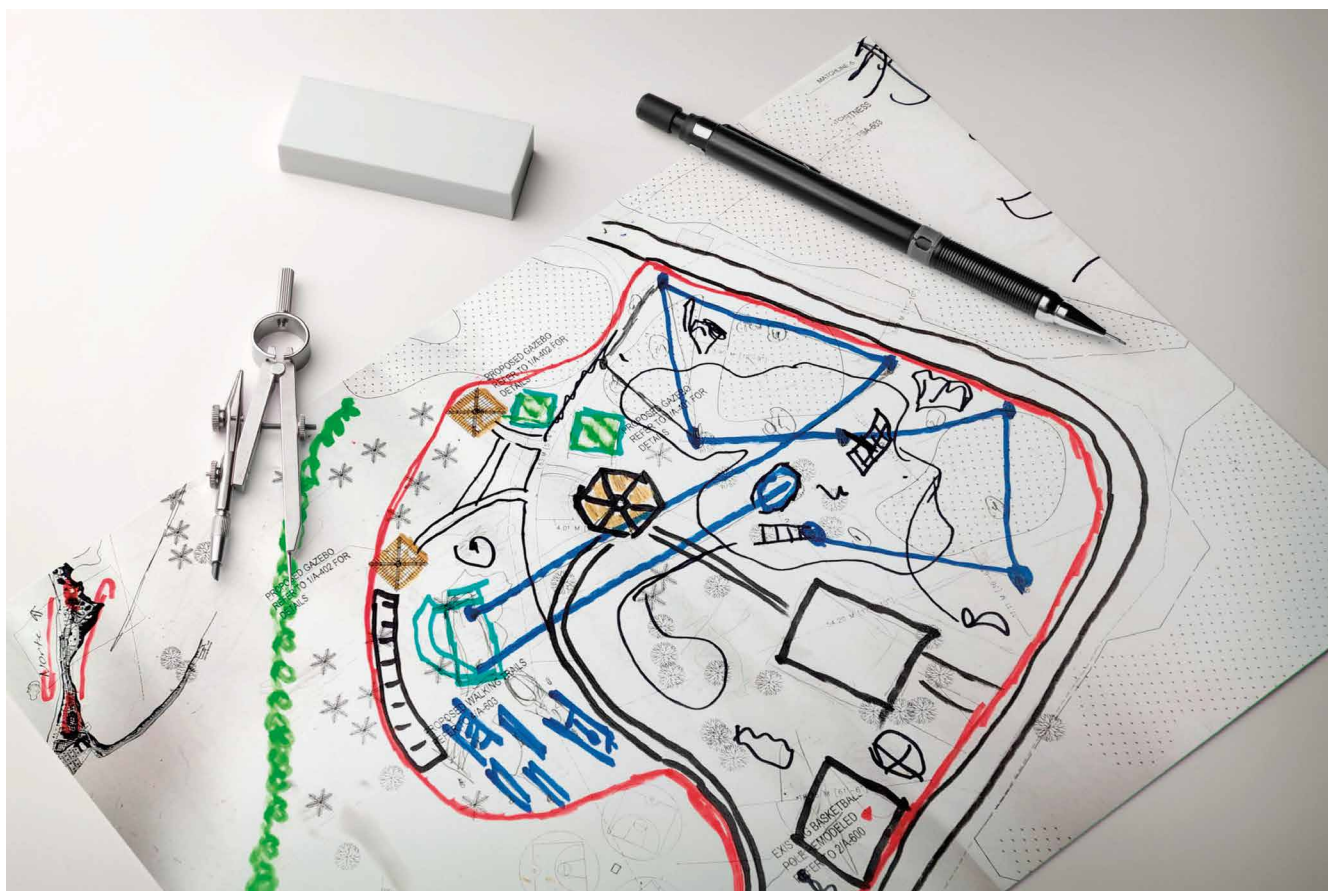
ALI is a specialist in Operation, Concepts and Technical Designs. Our experience allows us to create real and updated Master Plans. We know the processes from the first contact of the Client, until the moment of saying goodbye and preparing for the next adventure. The Master Plan is not just made up of sketches and technical images. Rather, it is a document product of a planned and organized work about the administrative and technical universe to efficiently operate an Adventure Course.

The Master Plan in general terms begins with an evaluation of the proposed site for the project, type of park, type of clients to be served, administration, flow of visitors, operation, areas and components of the park. Also, the personnel and their training, the management of technical activities, equipment, maintenance, inspections, promotion, marketing and above all, risk management.





"The Master Plan is the guide that allows us to implement step by step, organized and efficiently that Course... that Course which began with an IDEA and ALI can turn that IDEA into reality"









# Operational Design

Every industry, every company has processes and Adventure Courses are no exception. The activities offered by the Adventure Courses are unique, but they involve an inherent risk. ALI is an expert in Course Operation, we use the ACCT Operating Standard to develop and create safe and efficient operating programs. Generally speaking, the Operation of an Adventure Course is composed of

- 01

Registration Processes
- 02

Risk Management Plan
- 03

Operations Manual
- 04

Emergency Plans
- 05

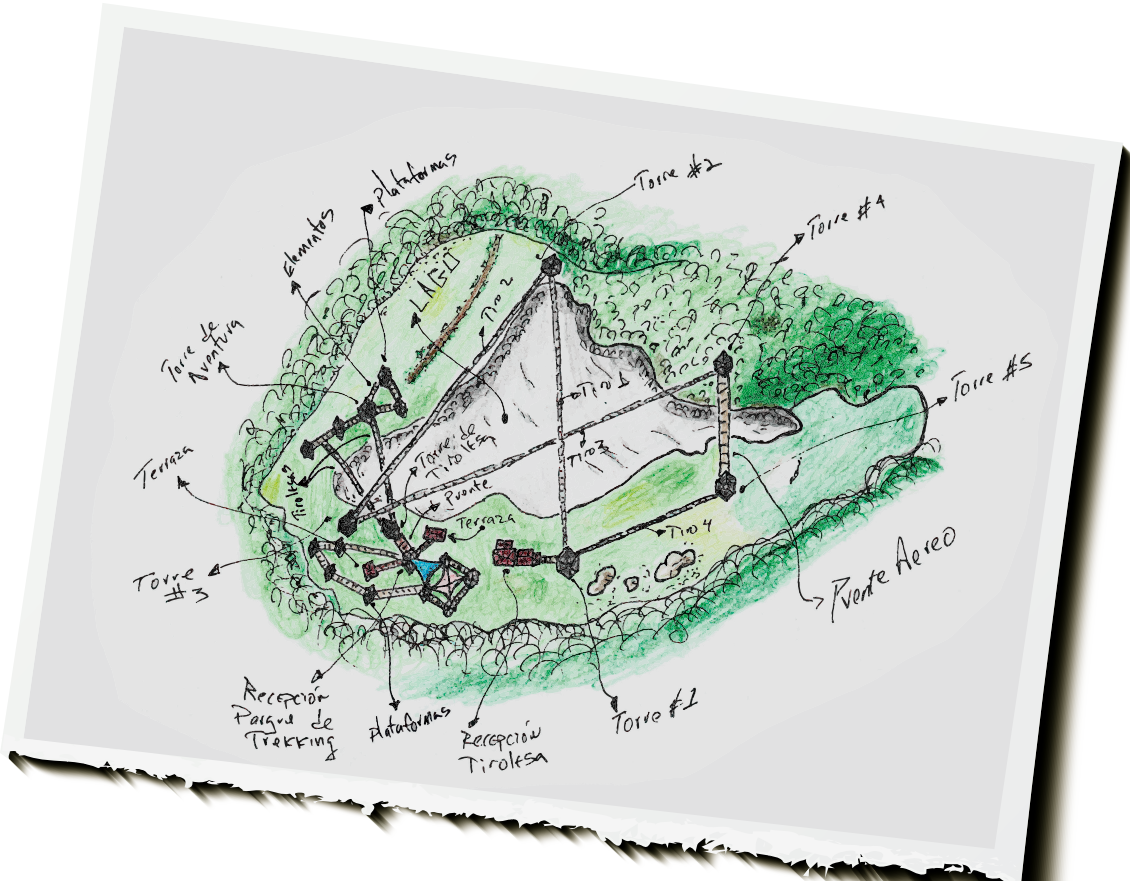
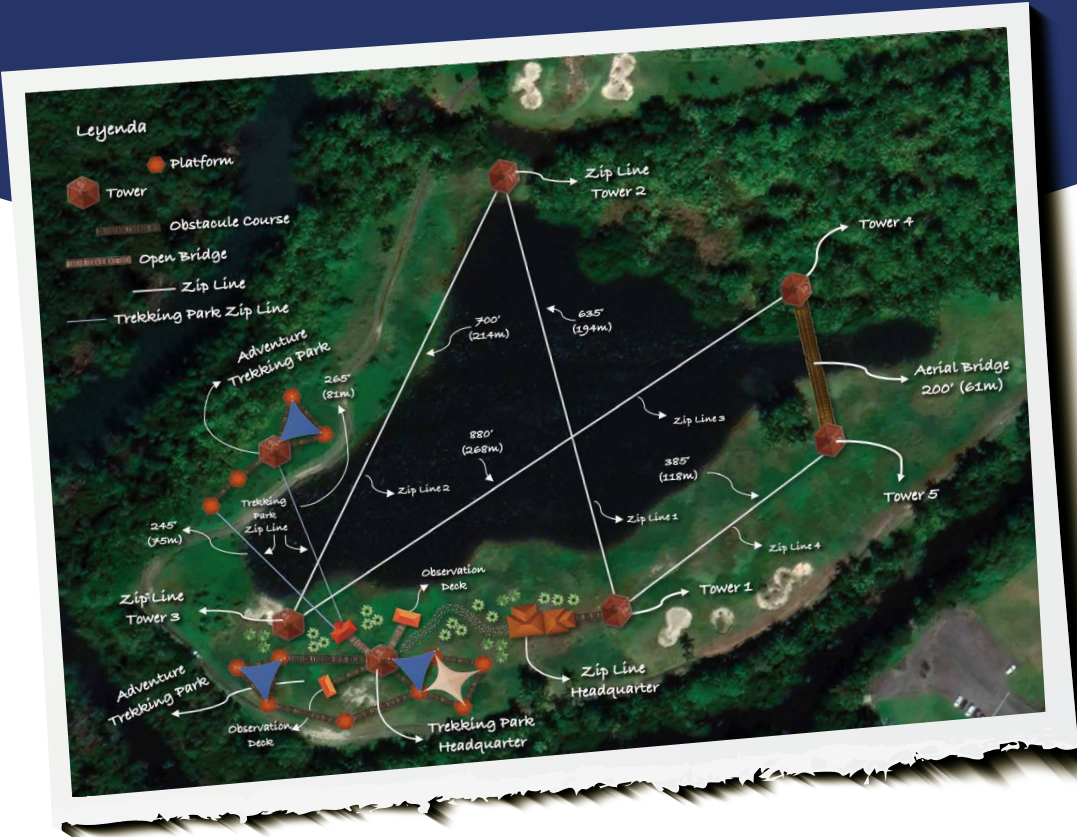
Training Plans
- 06

Course Operation
- 07

Internal Inspection Program
- 08

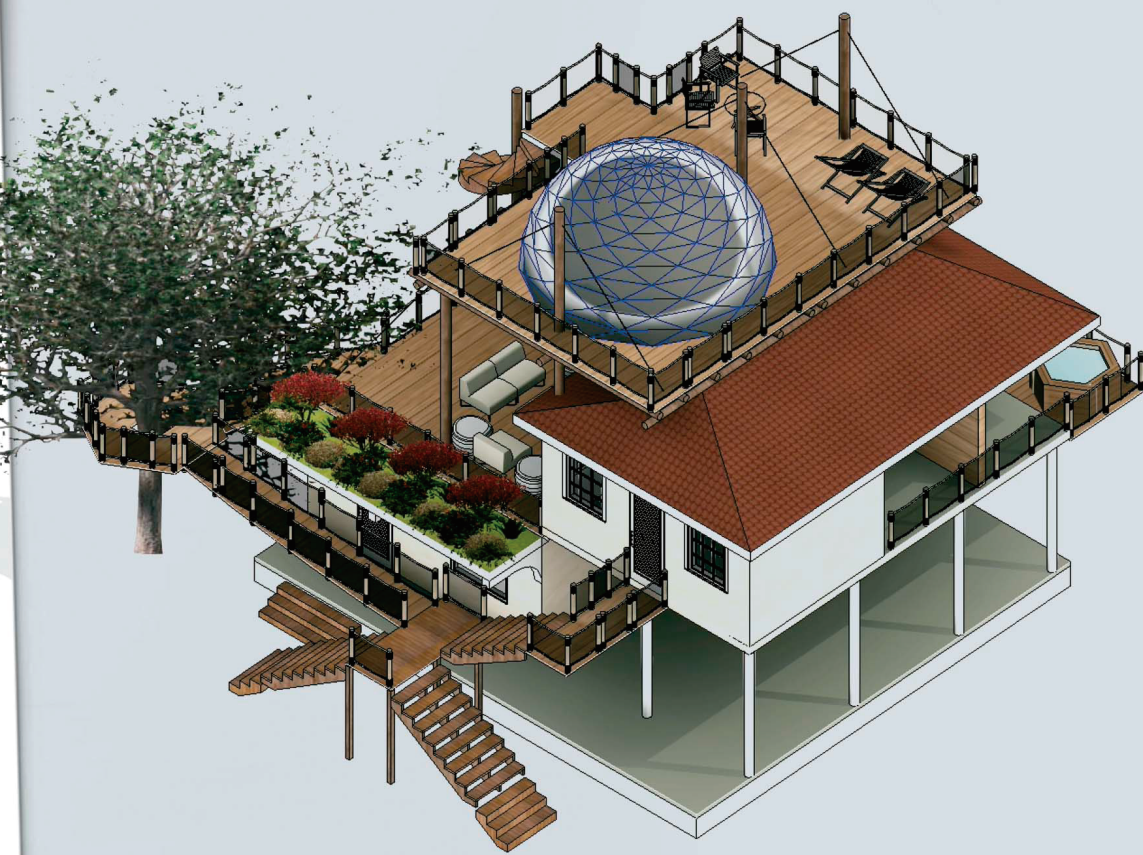
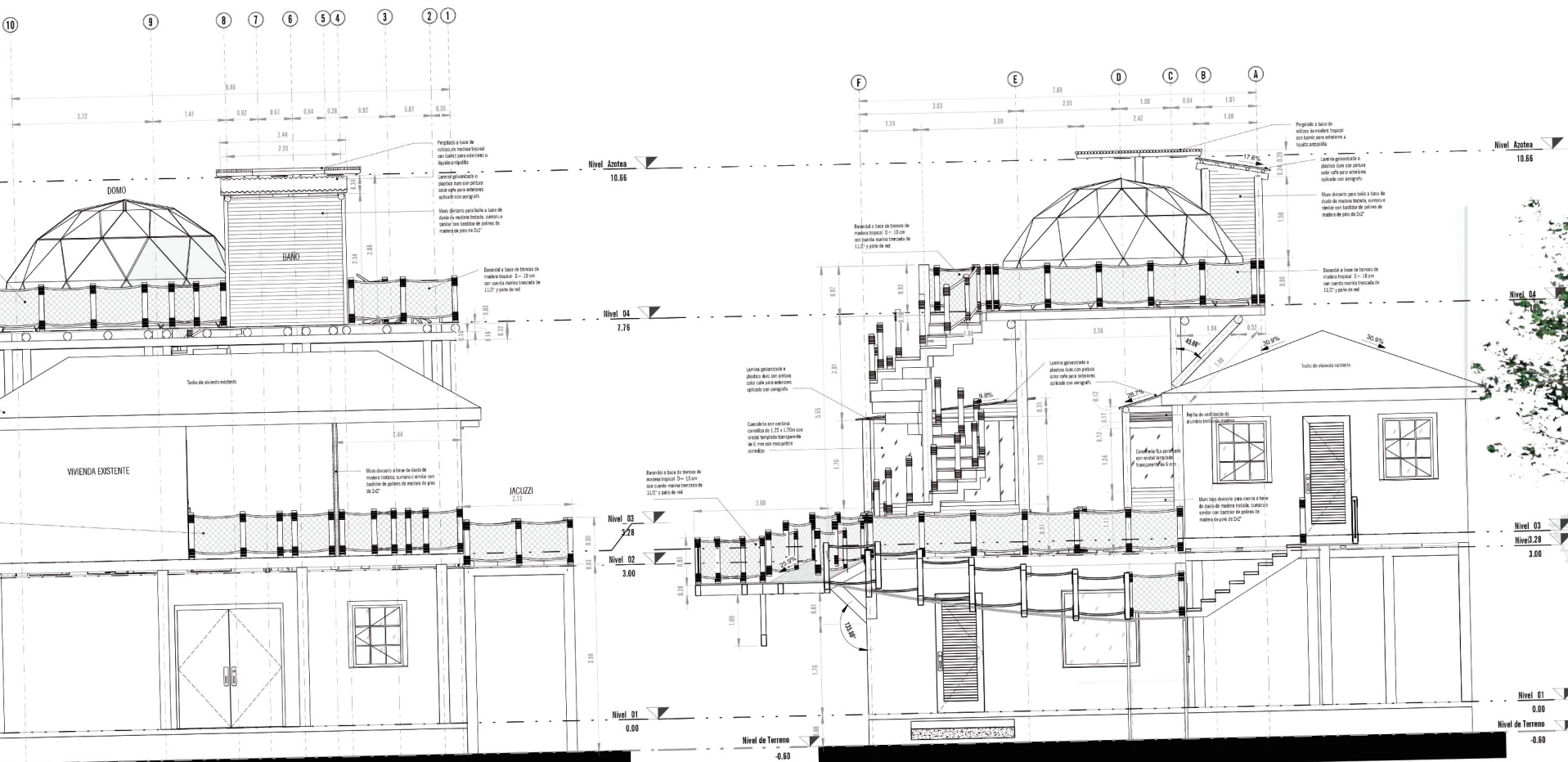
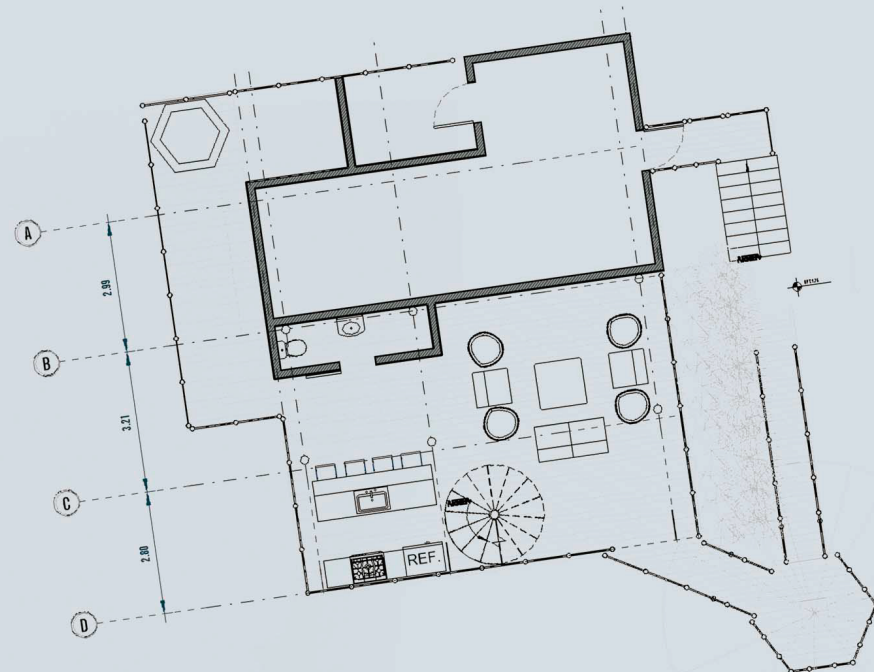
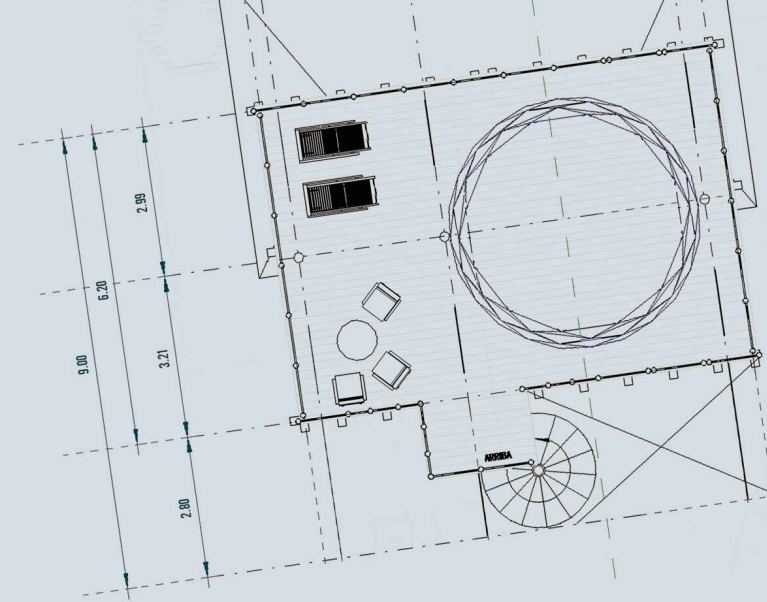
Maintenance Program
- 09

Customer and Staff Monitoring Plan



A Master Plan without the Operational Design is not functional. The structures, the different areas and components of the Park, the Adventure Elements; in brief, all the components of the Course have to be adapted for the proper functioning, safety and enjoyment of the true stars of the game, the Clients









LUMINOUS WHALE



BIG CRAB



REEF TOWER



GIANT SHELL



SOLAR PANELS



MARINE BRAIN



KRAKEN



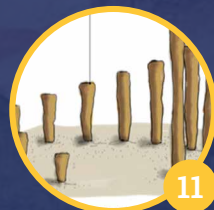
BUNGEE SWING



MARINE PLAYGROUND



CLIMBING REEF



STEP UP



CHALLENGE COURSE



SUNKEN SHIP



THEMING OF  
EXISTING BUILDING





# Creative & Technical Design

Many of the great projects where they were first illustrated, was on a napkin. It is inevitable to start a Design without illustrating an image, concepts embedded in structures with an individual enjoying them. Graphics and images are that magical component that transports the Client to visualize, feel and understand how their idea could look and work.

# Deliverables

Each project and each Master Plan are unique and specific to each Project. Also, each client has special requirements, which we work exclusively with our team of professionals. In general terms, once we perform the Design service, we deliver the following to the Client, as the case may be:



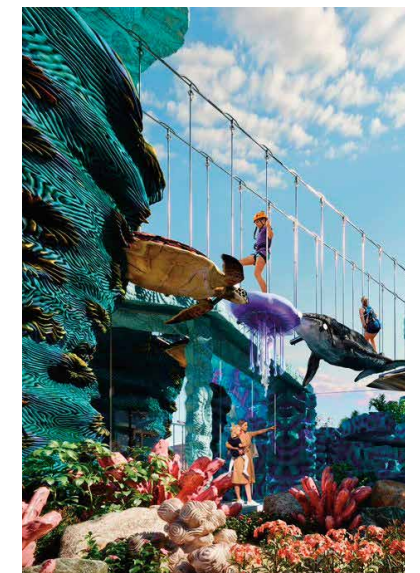
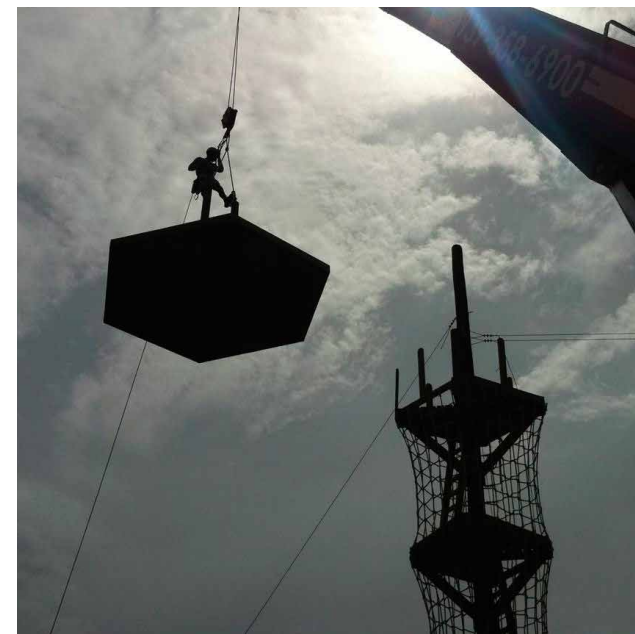
Then, our team of professionals and specialists in Adventure Parks develops and creates sketches, images, technical diagrams and construction plans for each of the areas and components of the Course. ALI ensures that the Construction Plans are useful and specific to build, complying with all the applicable Standards.

- |    |   |    |  |
|----|---|----|--|
| 01 | Structural construction plans   | 07 | Recommendations on the types of parts & materials  |
| 02 | List of materials needed  | 08 | Documentation and images of the Brake System Design.   |
| 03 | Illustrative diagrams of the project  | 09 | Documentation and images of the Continuous Belay   |
| 04 | Renders of the entire project   | 10 | Documentation and Operational Design: flow of participants, operation of the elements, training of personnel, emergency plans, etc |
| 05 | Documentation of the calculations of the tensions, WLL and the safety factors, etc. | 11 | Recommendations on Personal Protective Equipment (PPE).  |
| 06 | Recommendations of the type of Steel cable to be used                               |    |  |





*Aire Libre Internacional*



more than 25 years  
of experience  
in Adventure  
Courses

[WWW.AIRELIBREINTERNACIONAL.COM](http://WWW.AIRELIBREINTERNACIONAL.COM)



# Contacts

Dr. Luis D. Acevedo

939-247-4507

San Juan, Puerto Rico

airelibrepr@gmail.com

Khiary A. Laboy Enchautegui

321-424-4214

Guánica, Puerto Rico

info@airelibreinternacional.com

Dr. José H. González

603-369-8236

Carolina del Sur

josegonzalezsanders@gmail.com

 @airelibrepr

 @airelibreinternacionalpr

 @airelibreinternacional







[WWW.AIRELIBREINTERNACIONAL.COM](http://WWW.AIRELIBREINTERNACIONAL.COM)